



FFA S.A.F.E. Saving Area Farms Effectively

WHAT IS PENNSYLVANIA FFA SAFE?



FFA SAFE is a student-led effort in Pennsylvania to develop detailed *Farm Emergency Response Maps* for use by local emergency responders. The program allows FFA youth the unique opportunity to learn important mapping and GPS skills while also helping farm owners and operators to be proactive in emergency planning to minimize financial loss and potential environmental impacts.

HOW DOES IT WORK?

FFA students, under the direction of FFA advisors in their local schools, will produce farm emergency response maps that identify features on a farm that are important for emergency response personnel, such as firefighters. Producing the map will require farmer approval and a visit by the student where they will collect data to produce a *Farm Emergency Response Map*. Students will return to their schools and use computerized geospatial mapping technologies to produce a final farm emergency response map.

HOW CAN FARMERS HELP?

FFA members will ask farmers' permission to map their farms and will need to gather information to complete the mapping program. Farmers may sign up to be contacted by an FFA member. By agreeing to participate in the project, farmers will help FFA students complete a valuable learning experience, protect the health and safety of local emergency responders, and reduce economic and financial losses.

WHO CAN ACCESS COLLECTED INFORMATION?

All data collected as a part of the FFA SAFE program will not be distributed to any other organization without permission from the farmer. The farm emergency response map will be available to emergency response personnel, on-site and at all times, in the event of an emergency.

GOALS:

- Prepare *Farm Emergency Response Maps* to protect farms and reduce hazards for first responders.
- Educate FFA students in farm safety and the use of geospatial technologies.



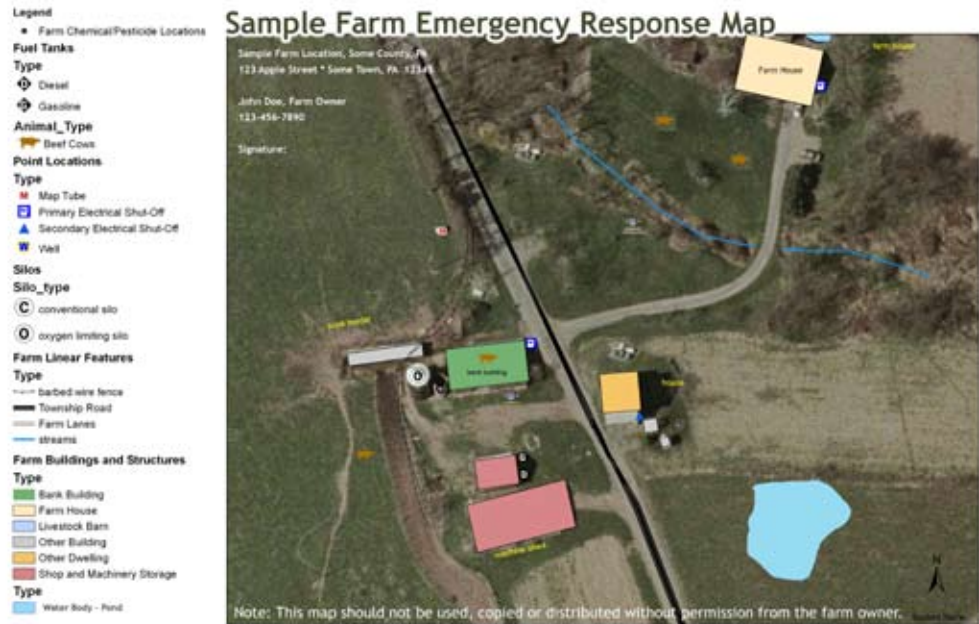
FFA SAFE is supported by a variety of agricultural organizations including the Penn State College of Agricultural Sciences, PA's agricultural member organizations, PA Agri-businesses and PA emergency responder groups.



“ Help us help you! Work with us to identify and map hazardous materials on the farms in your area. ”



A Farm Emergency Response Map contains information about hazards and important assets that emergency response personnel need to know in the event of an emergency, such as fuel storage locations, gas shutoffs, chemical storage sites, septic systems and more. The figure to the right is a sample farm emergency response map.



WHY IS THIS IMPORTANT?

FARMERS: A farm emergency response map provides added protection for a farmer in the event of an emergency, such as a fire. Livestock and other valuable assets will be



better protected if local emergency responders know locations and types of hazards, such as agricultural chemicals. Not knowing the nature of farm hazards reduces the effectiveness of emergency response.

Farm emergency response maps also protect other assets on the farm such as septic systems and water supplies from unnecessary damages caused by response personnel. Having a *Farm Emergency Response Map* available to local emergency responders avoids incidental damages to the farm and provides a more effective response.

FFA STUDENTS: FFA students will learn the importance of farm safety and the related contribution of farm emergency response maps. In addition, students will become skilled in the use geospatial technologies, such as global positioning systems (GPS) and geographic information systems (GIS), in the development of the farm emergency response maps.

LOCAL EMERGENCY RESPONDERS: Exposure to toxic chemicals, explosive fuel storage areas and other hazards confront local emergency responders when dealing with farm emergencies and often in adverse weather conditions. Knowledge of potential hazards on a farm early in the response can avoid unnecessary loss of human life and reduce dangers. Local emergency responders risk their health to do their jobs and this project will increase their safety.

CONTACTS



Michael Brammer,
Executive Director
Pennsylvania FFA
2301 North Cameron Street
Harrisburg, PA 17110-9406
(717) 705-9551

PENNSYLVANIA STATE UNIVERSITY



College of Agricultural Sciences
Department of Crop & Soil Sciences
Cooperative Extension

Rick Day or Bob Neiderer
119 ASI Building
University Park, PA 16802
email: farmsafe@psu.edu
ph: 877.722.4724

<http://www.ffafarmsafe.org>

“ Please help FFA students complete a valuable learning experience mapping hazardous materials on farms.”